



websters

6 Haverscroft Close, Taverham

Guide Price **£400,000**

websters.



6 Haverscroft Close

Taverham, Norwich

Presented to the market with no onward chain, this five bedroom detached house offers spacious and versatile living accommodation, ideal for families seeking a home to make your own.

Upon entering, you are welcomed by a hallway that leads to the kitchen, well equipped with appliances. A further door to the ground floor bedroom and wet room. Then finally the further reception rooms towards the rear. The kitchen is thoughtfully designed, featuring ample storage and work surfaces, while the adjoining dining area creates a sociable setting for family meals or gatherings, or possibly a space to open up further.

- Offered with no onward chain
- Detached five bedroom property with single garage
- Solar panels fitted
- En suite to principle bedroom
- Private rear garden
- Versatile living accommodation





6 Haverscroft Close

Taverham, Norwich

Upstairs, the principal bedroom benefits from a stylish en suite shower room (perfect for added privacy and convenience), and the additional three bedrooms are all well-sized, allowing for a variety of uses such as guest rooms, home offices, or playrooms. The family bathroom is well equipped, but the wet room has been recently installed.

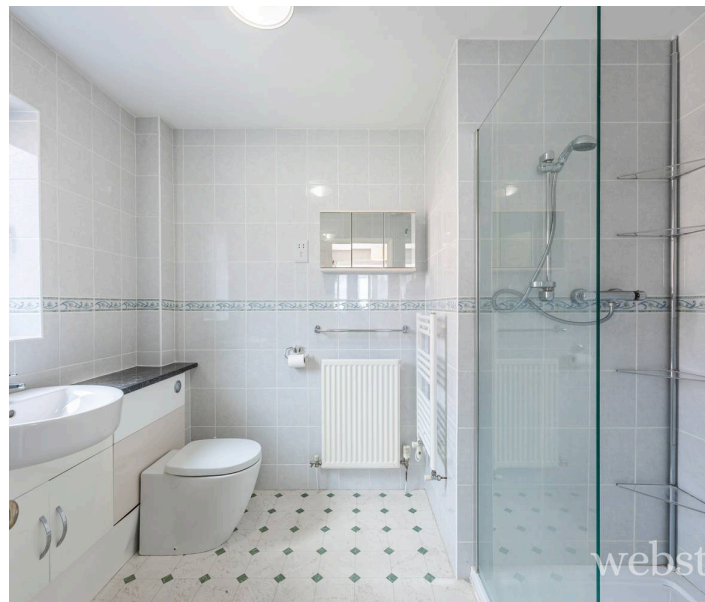
The property is further enhanced by the installation of solar panels (helping to reduce energy costs and improve sustainability), and a single garage provides secure parking or valuable storage options.

Council Tax band: TBD

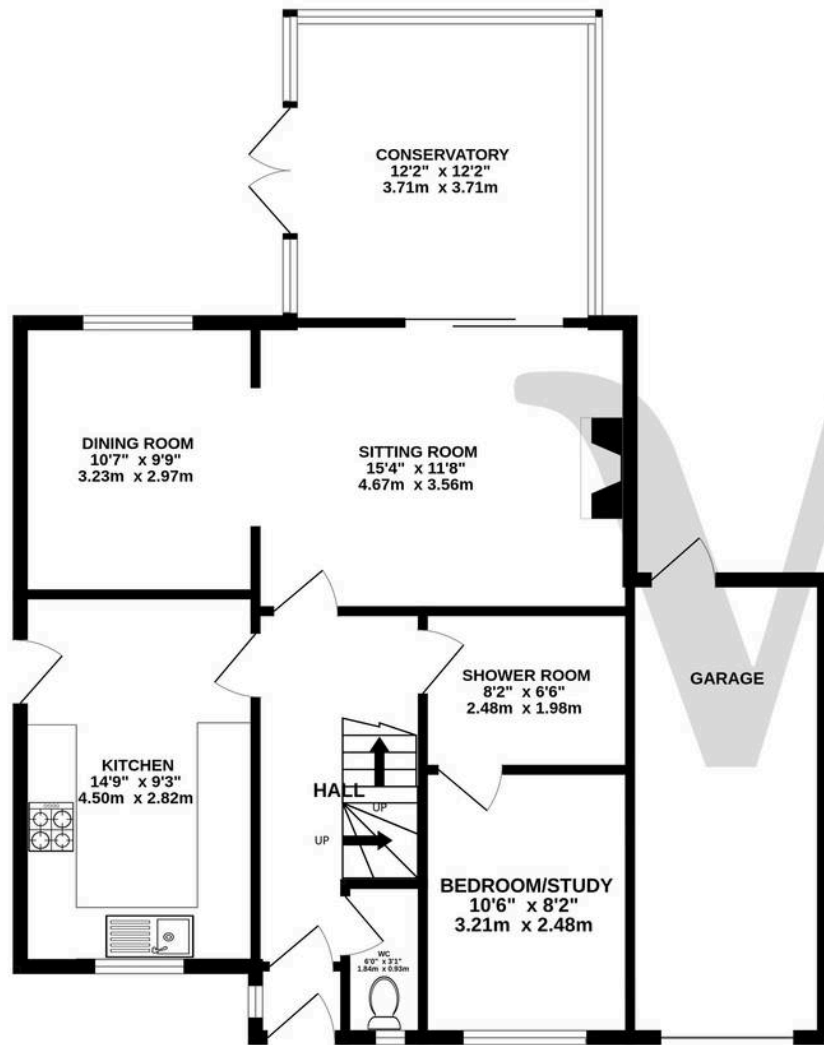
Tenure: Freehold

EPC Energy Efficiency Rating: D

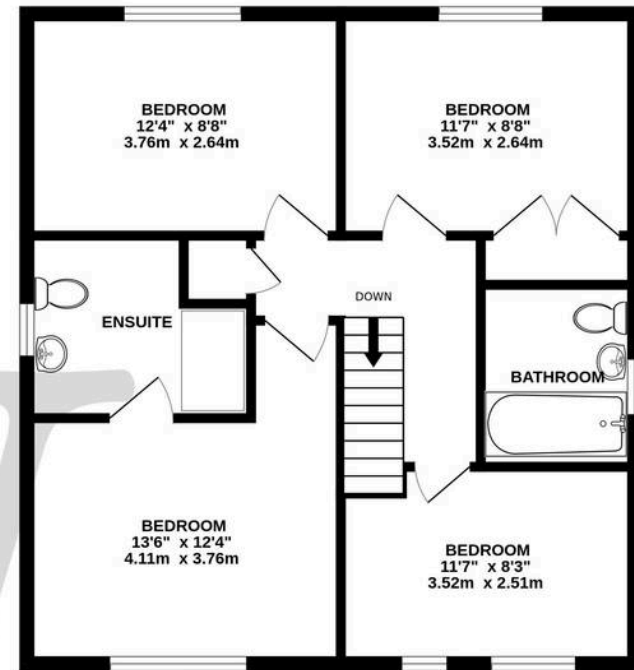
EPC Environmental Impact Rating: D



GROUND FLOOR
923 sq.ft. (85.7 sq.m.) approx.



1ST FLOOR
610 sq.ft. (56.7 sq.m.) approx.



TOTAL FLOOR AREA: 1533 sq.ft. (142.4 sq.m.) approx.

Whilst every attempt has been made to ensure the accuracy of the floorplan contained here, measurements of doors, windows, rooms and any other items are approximate and no responsibility is taken for any error, omission or mis-statement. This plan is for illustrative purposes only and should be used as such by any prospective purchaser. The services, systems and appliances shown have not been tested and no guarantee as to their operability or efficiency can be given.

Made with Metropix ©2026