



websters.

## 14 Mills Close, Taverham

Offers in Region of £400,000

websters.



## 14 Mills Close

Taverham, Norwich

Offered to the market with no onward chain, this detached three-bedroom bungalow occupies a generous corner plot in the well-regarded village of Taverham, presenting an excellent opportunity for modernisation and enhancement.

The accommodation is arranged over a single level and is accessed via a central entrance hall, which provides a natural flow through the principal rooms. The sitting room is well-proportioned and filled with natural light, with a fireplace forming an attractive focal point. The kitchen is complemented by a useful pantry and offers scope for reconfiguration or extension, subject to the necessary consents, with an adjoining lean-to providing further access to the garden.

- Offered with no onward chain
- Detached bungalow in sought-after Taverham location set back on a generous plot
- Newly fitted bathroom
- Spacious sitting room with fireplace
- Kitchen with pantry (scope for modernisation)
- Garage and driveway providing ample parking





## 14 Mills Close

Taverham, Norwich

The property benefits from a recently fitted bathroom, while the remaining accommodation offers a blank canvas for prospective purchasers. The three bedrooms are all of a good size and enjoy a pleasant outlook over the surrounding gardens, offering flexibility for a variety of uses.

Set well back from the road, the bungalow is enveloped by its gardens, which extend to all sides and provide a high degree of privacy. The plot offers considerable potential for landscaping or further development, subject to planning permission. A garage and private driveway provide ample off-street parking.

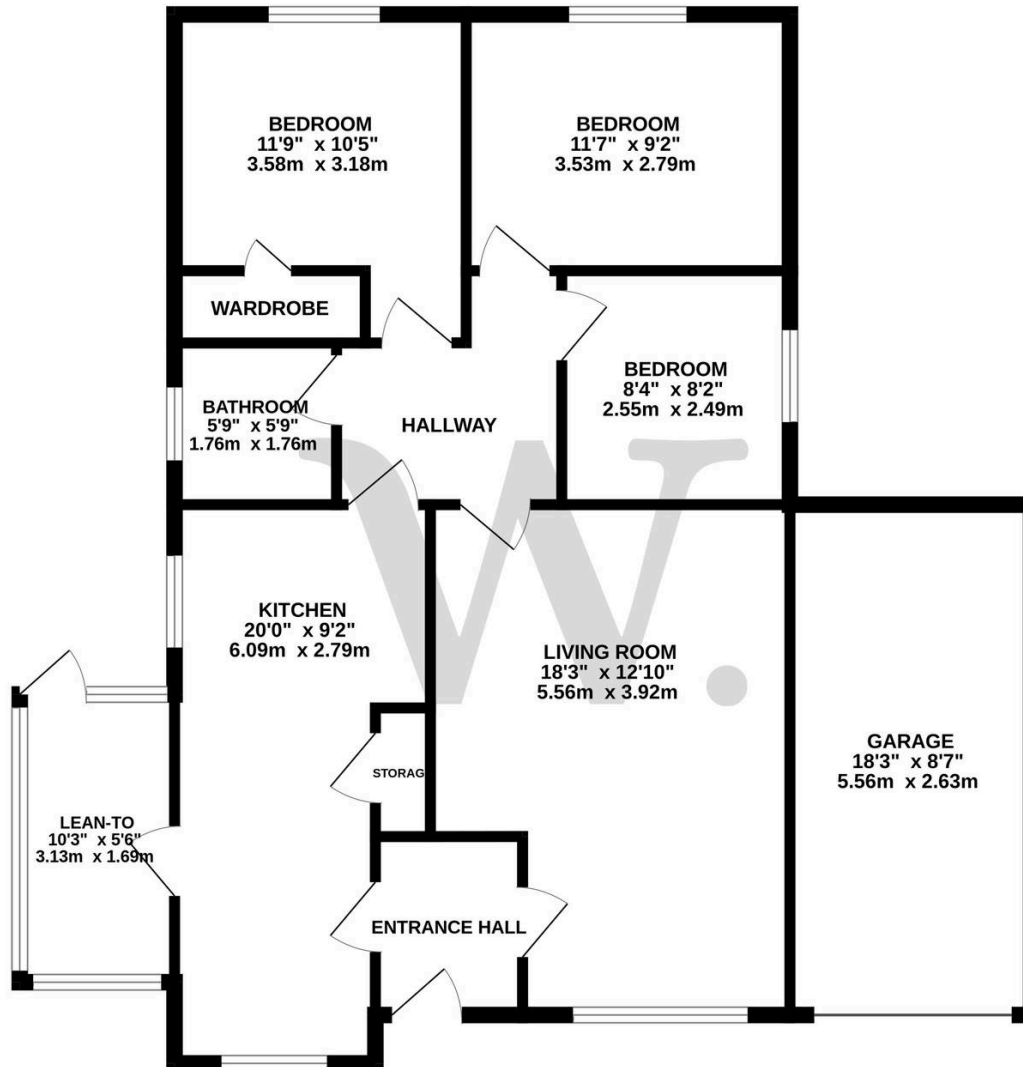
This is a rare opportunity to acquire a property with significant potential in a sought-after location, well placed for access to Norwich and the surrounding countryside.

Council Tax band: C

Tenure: Freehold



GROUND FLOOR  
1013 sq.ft. (94.1 sq.m.) approx.



TOTAL FLOOR AREA: 1013 sq.ft. (94.1 sq.m.) approx.

Whilst every attempt has been made to ensure the accuracy of the floorplan contained here, measurements of doors, windows, rooms and any other items are approximate and no responsibility is taken for any error, omission or mis-statement. This plan is for illustrative purposes only and should be used as such by any prospective purchaser. The services, systems and appliances shown have not been tested and no guarantee as to their operability or efficiency can be given.  
Made with Metropix ©2026