



15 Burleigh Tower Munnings Road, Norwich
£120,000 Leasehold



websters.

Enjoying an enviable position on the third floor, this impressively renovated two bedroom apartment presents a fantastic opportunity for both first time buyers and investors, offered with no onward chain for a seamless purchase. The property has been fully renovated throughout, creating a turn key home that combines style, comfort and practicality.

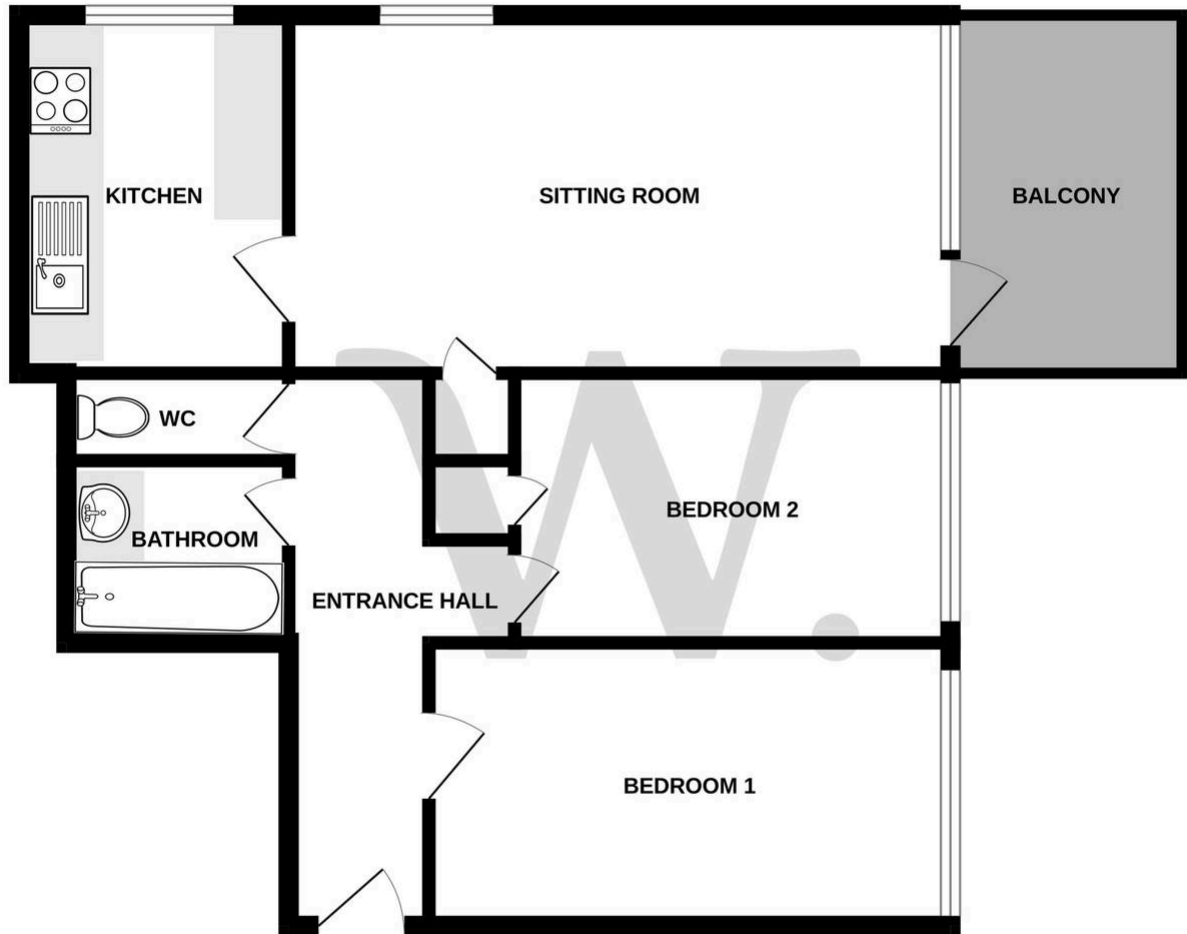
Step inside to discover a spacious dual aspect lounge and dining area, flooded with natural light and offering direct access to a private balcony, where you can take in stunning panoramic views over Norwich and the picturesque expanse of Mousehold Heath (a rare vantage point in this sought-after area). The modern kitchen has been thoughtfully refurbished, featuring sleek cabinetry and integrated appliances to suit contemporary living. Both bedrooms are well proportioned, providing ample space for relaxation or working from home, while the stylish bathroom has been upgraded with quality fixtures and fittings.



- Spacious third floor leasehold apartment in a convenient location
- Impressively renovated throughout
- Great first purchase or investment property
- Communal grass area surrounding the tower block
- Apartment with balcony
- Turn key property



GROUND FLOOR



Whilst every attempt has been made to ensure the accuracy of the floorplan contained here, measurements of doors, windows, rooms and any other items are approximate and no responsibility is taken for any error, omission or mis-statement. This plan is for illustrative purposes only and should be used as such by any prospective purchaser. The services, systems and appliances shown have not been tested and no guarantee as to their operability or efficiency can be given.
Made with Metropix ©2025

You can include any text here. The text can be modified upon generating your brochure.