



**25 Mardle Street, Norwich**

**£375,000 Freehold**



**websters.**



**Presenting this exceptional four-bedroom detached home**, perfectly positioned backing onto open fields. Designed for modern living, it offers a private garden oasis and a spacious open-plan kitchen/diner ideal for family life and entertaining.

The hallway leads to a generous living room opening into a bright conservatory, while the stylish kitchen/diner provides ample storage and workspace. A convenient downstairs W.C. completes the ground floor.

Upstairs features four well-proportioned bedrooms, including a principal suite with ensuite shower, plus a family bathroom. The boarded loft offers extra storage.

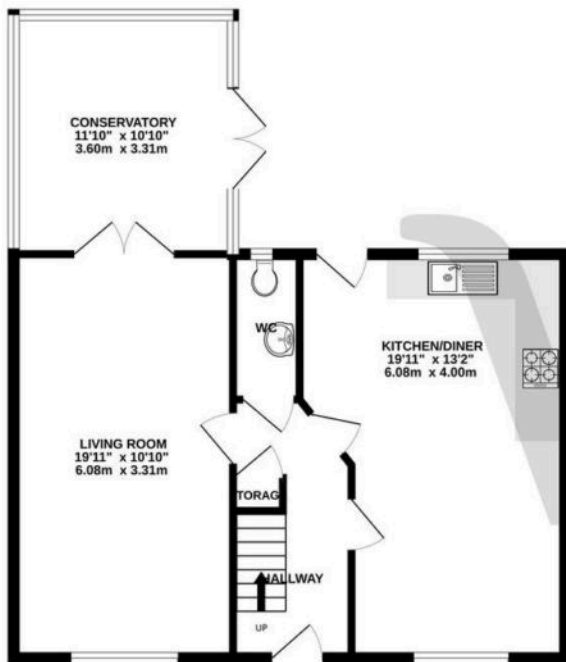
Outside, the enclosed rear garden provides a peaceful retreat with sheltered decking, alongside a single garage, off-road parking, and solar panels.



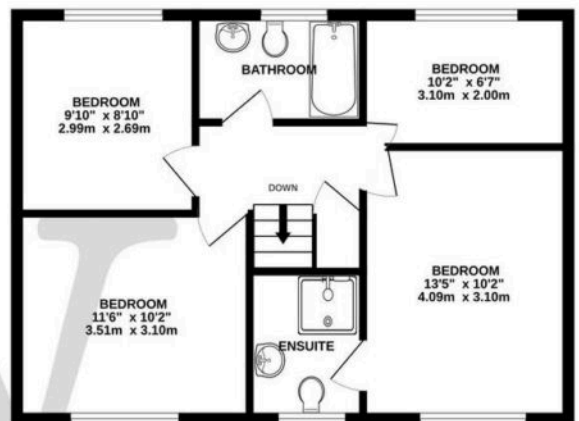
- Detached family home
- 4 spacious bedrooms and ensuite off principal
- Spacious kitchen/diner
- Large living room with conservatory
- Solar panels
- Quiet cul-de-sac location backing onto Bowthorpe Southern Park
- Private garden with sheltered decking
- Garage with off-road parking



GROUND FLOOR  
672 sq.ft. (62.5 sq.m.) approx.



1ST FLOOR  
544 sq.ft. (50.6 sq.m.) approx.



TOTAL FLOOR AREA : 1217 sq.ft. (113.0 sq.m.) approx.

Whilst every attempt has been made to ensure the accuracy of the floorplan contained here, measurements of doors, windows, rooms and any other items are approximate and no responsibility is taken for any error, omission or mis-statement. This plan is for illustrative purposes only and should be used as such by any prospective purchaser. The services, systems and appliances shown have not been tested and no guarantee as to their operability or efficiency can be given.  
Made with Metropix ©2025

You can include any text here. The text can be modified upon generating your brochure.