



7 Poppyfields, Horsford

Offers in Region of £375,000

websters.



7 Poppyfields

Horsford, Norwich

Located in a quiet cul-de-sac, this four-bedroom detached home offers modern comfort in a convenient setting. Inside, you'll find a spacious layout with living areas that flow seamlessly, including a bright conservatory and a modern kitchen/diner with French doors leading outside, plus a downstairs WC. Upstairs are four well-proportioned bedrooms, including a principle bedroom with en-suite, along with a family bathroom.



websters.



7 Poppyfields

Horsford, Norwich

Close to Norwich & the airport, the property provides easy access to local amenities while maintaining a peaceful residential setting. A private driveway and garage offer plenty of parking.

The enclosed rear garden features an area laid to lawn, patio area, and mature greenery – an ideal space for relaxing, dining outdoors, or entertaining.



websters.



7 Poppyfields

Horsford, Norwich

With its smart design, practical features, and excellent location, this home presents a fantastic opportunity. Contact us to arrange a viewing.

Council Tax band: D

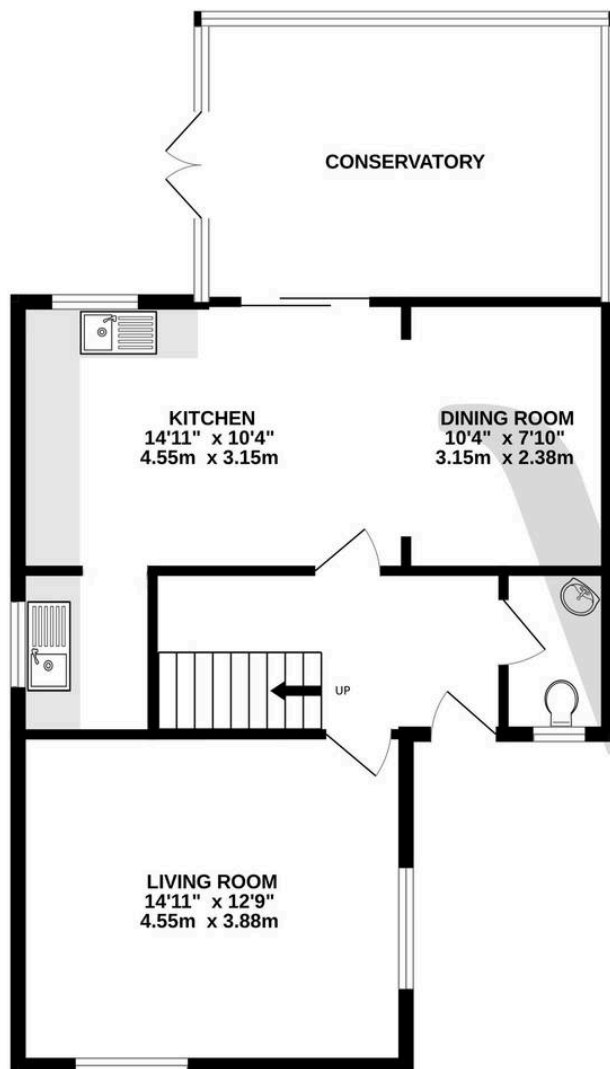
Tenure: Freehold

- Four bedroom detached property with en-suite
- Close proximity to Norwich & Airport
- Private driveway & Garage parking
- Enclosed rear garden, patio and lawn
- Cul-de-sac location
- Conservatory

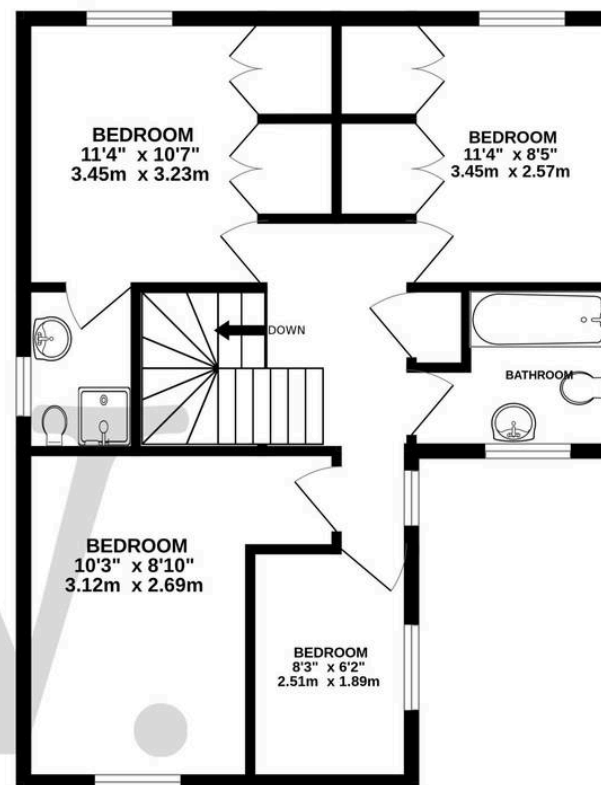


websters.

GROUND FLOOR
738 sq.ft. (68.6 sq.m.) approx.



1ST FLOOR
568 sq.ft. (52.7 sq.m.) approx.



TOTAL FLOOR AREA : 1305 sq.ft. (121.3 sq.m.) approx.

Whilst every attempt has been made to ensure the accuracy of the floorplan contained here, measurements of doors, windows, rooms and any other items are approximate and no responsibility is taken for any error, omission or mis-statement. This plan is for illustrative purposes only and should be used as such by any prospective purchaser. The services, systems and appliances shown have not been tested and no guarantee as to their operability or efficiency can be given.
Made with Metropix ©2025