



317a Drayton High Road, Norwich

£375,000 Freehold



websters.

This extended three-bedroom detached bungalow sits on a generous plot close to the city, offering scope to extend and a peaceful setting with great access to amenities.

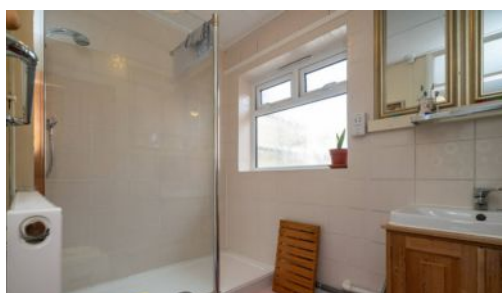
The 26-foot lounge/diner suits relaxing or entertaining, complemented by a cottage-style kitchen with Everhot stove. Two double bedrooms with built-in wardrobes, a third bedroom, and a modern shower room complete the layout.

A 25-foot conservatory opens to the mature enclosed garden. Ample storage, double glazing, gas central heating, driveway parking, and a garage with electric door add practicality.

With its spacious plot, gardens, and strong transport links, this is a rare find in a sought-after location.



- Extended three-bedroom detached bungalow
- Generous plot with room to extend further
- Close to amenities and bus links into the City
- Double glazed/ Gas central heating
- Ample parking with single garage
- Established rear garden, fully enclosed



GROUND FLOOR
1529 sq.ft. (142.1 sq.m.) approx.



W.

TOTAL FLOOR AREA : 1529 sq.ft. (142.1 sq.m.) approx.

Whilst every attempt has been made to ensure the accuracy of the floorplan contained here, measurements of doors, windows, rooms and any other items are approximate and no responsibility is taken for any error, omission or mis-statement. This plan is for illustrative purposes only and should be used as such by any prospective purchaser. The services, systems and appliances shown have not been tested and no guarantee as to their operability or efficiency can be given.
Made with Metropix ©2025

You can include any text here. The text can be modified upon generating your brochure.