

**83 Maidstone Road, Norwich**  
 £150,000 Leasehold



**websters.**

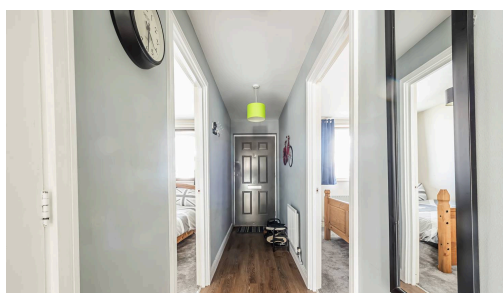


Introducing a contemporary 2 bedroom flat ideally situated in the heart of the bustling city centre. This third-floor apartment boasts a modern open-plan living space that is perfect for entertaining guests or unwinding after a busy day. The property features two spacious double bedrooms, providing ample space for relaxation and personalisation. A notable highlight is the possession of an ESW1 certificate B1.

Additionally, its prime location offers easy accessibility to a myriad of amenities and attractions, with the Norwich Train Station just a short stroll away. Don't miss the chance to make this sophisticated urban retreat your own.



- City Centre Location
- Open Plan Living
- ESW1 Certificate
- Third Floor Apartment
- Lift Access
- Two Double Bedrooms
- Long Lease
- Short Walk to Norwich Train Station



**Open Plan Living Space**

19' 4" x 17' 7" (5.89m x 5.35m)

A spacious and naturally light open plan living space, largely carpeted apart from the hard flooring within the kitchen area the property benefits from dual aspect balcony doors and uPVC windows. The kitchen area comprises of a range of units hosting cupboards and drawers with worksurface over, integral appliances including induction four point hob, built in oven and built in combination microwave oven., inset stainless steel sink.

**Bedroom 1**

13' 2" x 9' 1" (4.01m x 2.77m)

A well proportioned double bedroom, carpet and uPVC window to external aspect

**Bedroom 2**

12' 0" x 6' 0" (3.67m x 1.83m)

**Bathroom**

Three piece suite comprising of panelled bath with shower over, low level WC, hand basin.

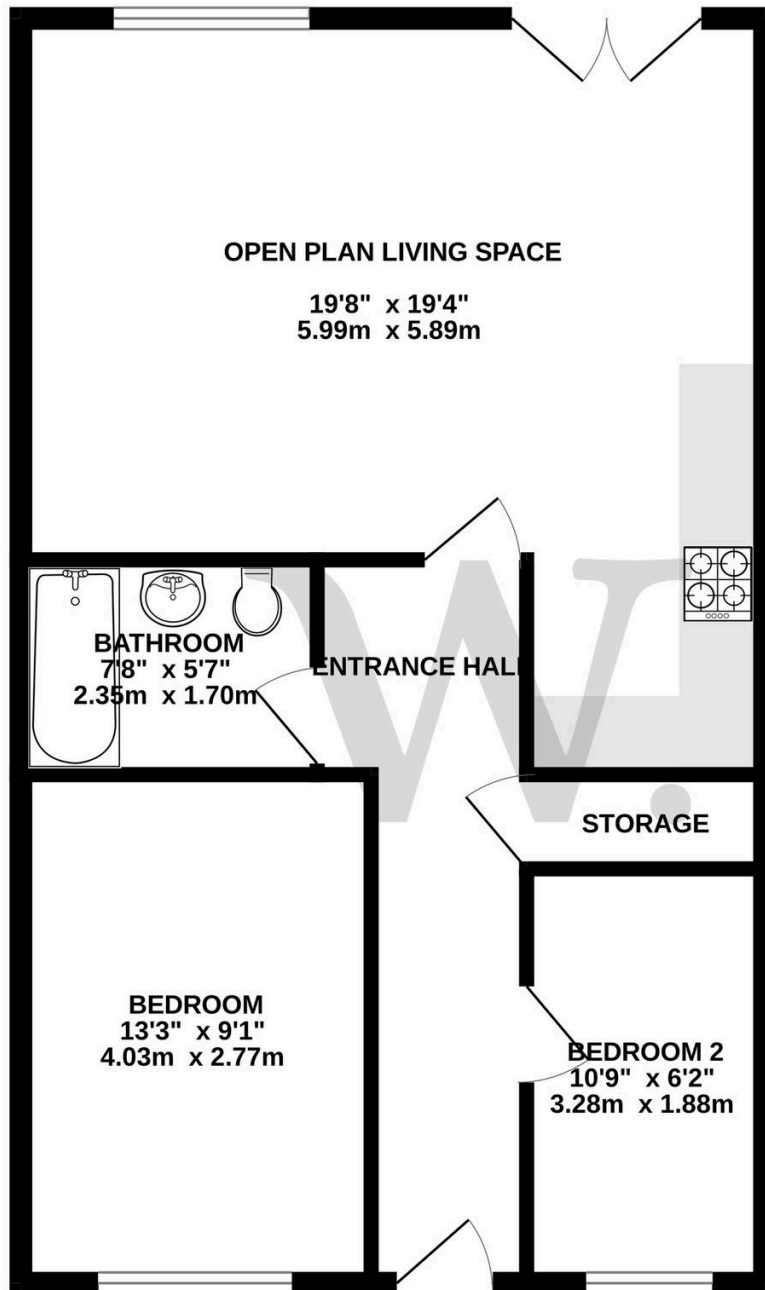
Council Tax band: B

Tenure: Leasehold

EPC Energy Efficiency Rating: C

EPC Environmental Impact Rating: C

## GROUND FLOOR



Whilst every attempt has been made to ensure the accuracy of the floorplan contained here, measurements of doors, windows, rooms and any other items are approximate and no responsibility is taken for any error, omission or mis-statement. This plan is for illustrative purposes only and should be used as such by any prospective purchaser. The services, systems and appliances shown have not been tested and no guarantee as to their operability or efficiency can be given.  
Made with Metropix ©2025

You can include any text here. The text can be modified upon generating your brochure.