



67 Whistlefish Court, Norwich

£430,000 Freehold



websters.

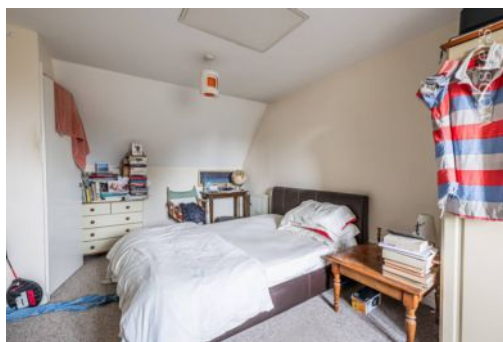
Websters Estate Agents are delighted to offer this light and spacious detached home, currently set up as a HMO, that offers versatile living throughout along with a private rear garden and ample off street parking. The property comes with no onward chain and is set in a quiet cul-de-sac to the west of the city. In brief, the property comprises; lounge, cloakroom, kitchen / diner, six double bedrooms, three ensuite shower rooms, a family bathroom and a converted double garage with ample storage.

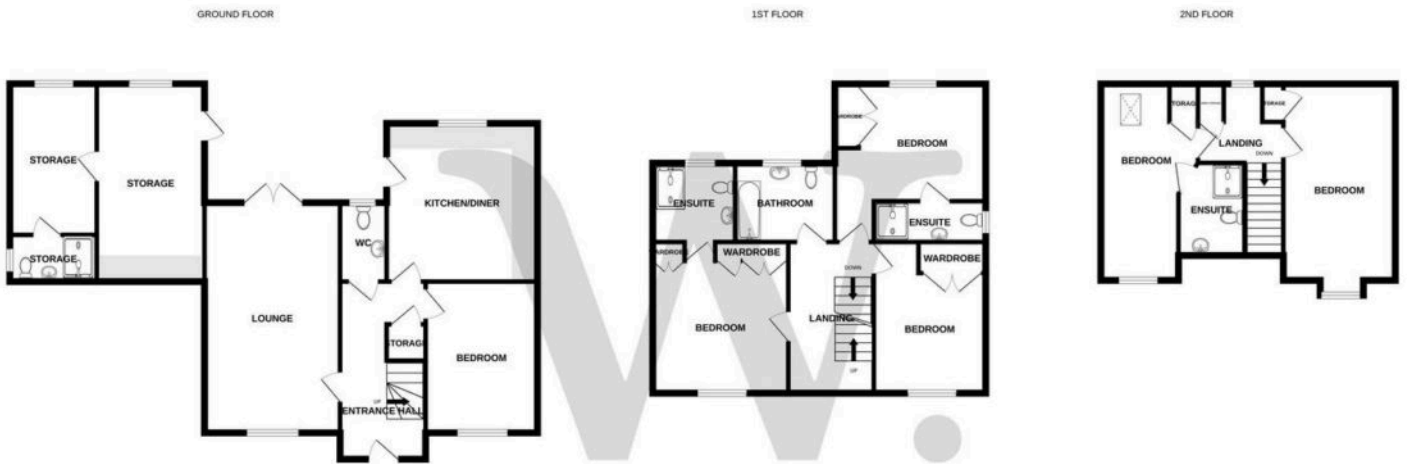
Council Tax band: E

Tenure: Freehold

EPC Energy Efficiency Rating: C

EPC Environmental Impact Rating: C





Whilst every attempt has been made to ensure the accuracy of the floorplan contained here, measurements of doors, windows, rooms and any other items are approximate and no responsibility is taken for any error, omission or mis-statement. This plan is for illustrative purposes only and should be used as such by any prospective purchaser. The services, systems and appliances shown have not been tested and no guarantee as to their operability or efficiency can be given.
 Made with Metropix ©2025

You can include any text here. The text can be modified upon generating your brochure.